

# PRODUCT CATALOG 2024

**AEROVAC**  
COMPOSITES ONE

[aerovac.com](http://aerovac.com)

**Aerovac LLC**  
**Headquarters**

955-10 National Parkway  
Schaumburg, IL 60173  
USA

Phone: +1 224-313-4418

# Bagging Film

## BAGGING FILM APPLICATION SUMMARY

PRODUCT	MATERIAL	UPPER USE TEMPERATURE °C/°F	TENSILE STRENGTH	ELONGATION %	CONFORM-ABILITY	APPROX. COST / M2	APPLICATION	MARKET	RESIN
SV4000	Nylon	212°C/414°F	15228 PSI	500%	++++	\$\$	Infusion, oven and autoclave cure cycles	Automotive, Aerospace, Defense	Polyester, Vinyl ester, Epoxy and Phenolic*
SV2000	Nylon	204°C/400°F	15000 PSI	400%	++++	\$\$\$\$	Autoclave cure cycles	Aerospace, Defense	Polyester, Vinyl ester, Epoxy and Phenolic*
HS8171	Nylon	204°C/400°F	15000 PSI	400%	++	\$\$\$	Autoclave cure cycles	Aerospace, Defense	Polyester, Vinyl ester, Epoxy and Phenolic*
HS8171 Quick Draw	Nylon	204°C/400°F	14000 PSI	415%	++	\$\$\$\$\$	Compaction or De-bulk	Aerospace, Defense, Automotive	Most common resin system
SV250	Polyurethane	135°C / 275°C	11000 PSI	500%	+++++	\$\$\$\$\$	Compaction or De-bulk	Aerospace, Defense, Automotive	Most common resin system
205B	Polyethylene and Nylon (30%)	120°C/248°F	6500 PSI	600%	+++	\$	Wet lay-up and infusion	Marine and Wind (Nacelles)	Polyester, Vinyl ester and Epoxy
200G	Polyethylene and Nylon (30%)	120°C/248°F	6500 PSI	500%	+++	\$	Wet lay-up and infusion	Marine and Wind (Nacelles)	Polyester, Vinyl ester and Epoxy

### Four Important Cost Considerations:

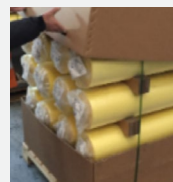
The price of vacuum bags is influenced not only by the composition of the film but also by four other factors: thickness, width, length, and packaging.

- 1. Thickness.** Films with a thickness of 3 mil have a higher cost compared to those with a thickness of 2 mil due to the increased quantity of raw material per square meter.
- 2. Width.** Films with widths exceeding 8 to 10 meters require specialized manufacturing and handling equipment, which may result in higher prices in some cases.
- 3. Length.** Film rolls with short lengths cannot be manufactured directly on the blown film extrusion line, leading to increased costs due to secondary operations.
- 4. Packaging.** The price may vary depending on the packaging method, as outlined to the right:



#### VFS (\$\$\$)

This packaging is designed for low volume sales, featuring individual cardboard tube protection for each roll.

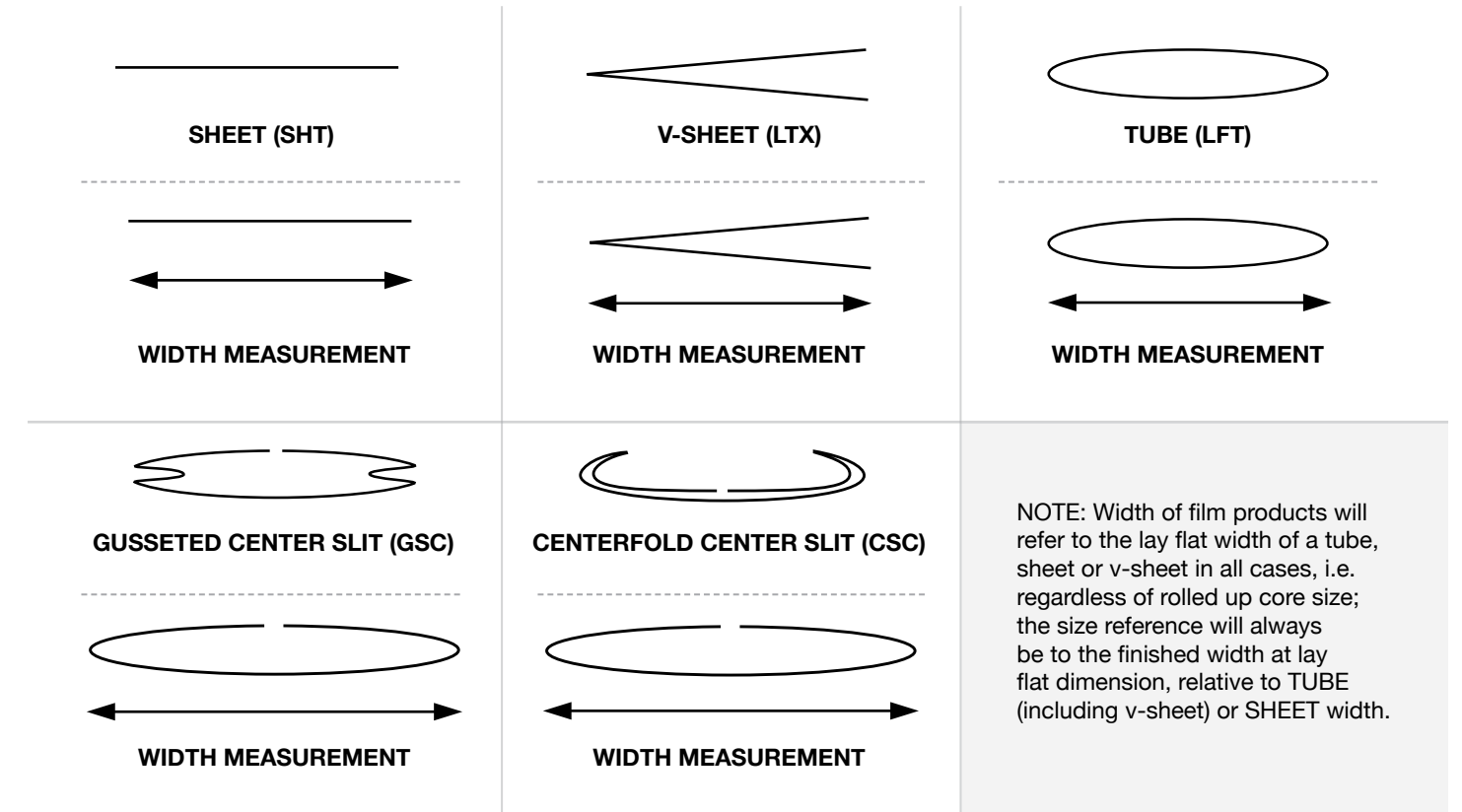


#### VFS2 (\$)

A protective cardboard box over the completed pallet. Packaging best suited for sale in full pallet quantities.

# Bagging Film

## HOW DIFFERENT PRODUCTS ARE MEASURED



# Bagging Film



## SV4000

SV4000 is a nylon-based film designed for parts with complex geometries, engineered to retain its soft properties even in dry conditions.

**Application:** Infusion, oven and autoclave cure cycles  
**Resin:** Polyester, Vinyl ester, Epoxy and Phenolic\*

PRODUCT CODE	DESCRIPTION	THICKNESS	FORMAT	WIDTH (INCHES)	LENGTH (FEET)
834241	VFS-SV4000-50-910-305-LFT	2 mil	LFT	36 *	1000
834195	VFS-SV4000-50-1220-305-LFT	2 mil	LFT	48*	1000
834196	VFS-SV4000-50-1370-305-LFT	2 mil	LFT	54*	1000
834197	VFS-SV4000-50-1520-305-LFT	2 mil	LFT	60*	1000
834198	VFS-SV4000-50-1830-305-LFT	2 mil	LFT	72*	1000
834194	VFS-SV4000-75-2300-152-LFT	3 mil	LFT	90*	500
834199	VFS-SV4000-50-910-305-LTX	2 mil	LTX	72 (open)	1000
834219	VFS-SV4000-50-1220-305-LTX	2 mil	LTX	96 (open)	1000
834223	VFS-SV4000-50-1370-305-LTX	2 mil	LTX	107 (open)	1000
834212	VFS-SV4000-50-1520-305-LTX	2 mil	LTX	12 (open)	1000
834213	VFS-SV4000-50-1830-305-LTX	2 mil	LTX	144 (open)	1000
834215	VFS-SV4000-75-2300-152-LTX	3 mil	LTX	181 (open)	500
834225	VFS-SV4000-50-910-610-SHT	2 mil	SHT	36	2000
834214	VFS-SV4000-50-1220-610-SHT	2 mil	SHT	48	2000
834217	VFS-SV4000-50-1370-305-SHT	2 mil	SHT	54	1000
834218	VFS-SV4000-50-1520-305-SHT	2 mil	SHT	60	1000
834220	VFS-SV4000-50-1830-305-SHT	2 mil	SHT	72	1000
834226	VFS-SV4000-75-2300-152-SHT	3 mil	SHT	91	500

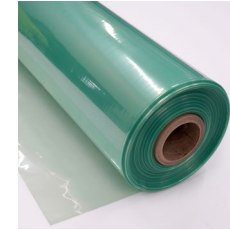
COLOR	TENSILE
PINK	15,228 PSI
ELONGATION	MAX USE TEMP.
500%	414 F / 212 C

Available in 2 and 3 mil thicknesses up to 4.6 meters wide in standard sheet, v-sheet and lay flat tube formats.

\* Application of phenolic resin is feasible but necessitates validation on a case-by-case basis, primarily considering factors such as temperature and resin type.

\*\* For tube format film (LFT), the width in inches is measured as the envelope's width, which can be unfolded to double the size.

# Bagging Film



## HS8171

HS8171 is the traditional co-extruded modified nylon film, which has been qualified to numerous Aerospace manufacturer specifications.

**Application:** Autoclave cure cycles  
**Resin:** Polyester, Vinyl ester, Epoxy and Phenolic\*

PRODUCT CODE	DESCRIPTION	THICKNESS	FORMAT	WIDTH (INCHES)	LENGTH (FEET)
834031	VF-HS8171-51-965-305-LFT	2 mil	LFT	38*	1000
834033	VF-HS8171-51-1270-305-LFT	2 mil	LFT	50*	1000
834035	VF-HS8171-51-1575-305-LFT	2 mil	LFT	62*	1000
834037	VF-HS8171-51-1828-305-LFT	2 mil	LFT	72*	1000
834039	VF-HS8171-51-952-305-LTX	2 mil	LTX	74 (open)	1000
834032	VF-HS8171-51-1257-305-LTX	2 mil	LTX	98 (open)	1000
834034	VF-HS8171-51-1562-305-LTX	2 mil	LTX	122(open)	1000
834036	VF-HS8171-51-1816-305-LTX	2 mil	LTX	142 (open)	1000
834038	VF-HS8171-51-914-305-SHT	2 mil	SHT	36	1000
697838	VF-HS8171-51-1219-305-SHT	2 mil	SHT	48	1000
675664	VF-HS8171-51-1524-305-SHT	2 mil	SHT	60	1000
834040	VF-HS8171-51-1778-305-SHT	2 mil	SHT	70	1000

COLOR	TENSILE
GREEN	15,000 PSI
ELONGATION	MAX USE TEMP.
400%	400 F / 204 C

Available in 2 mil thicknesses up to 3.6 meters wide in standard sheet, v-sheet and lay flat tube formats.

\* Application of phenolic resin is feasible but necessitates validation on a case-by-case basis, primarily considering factors such as temperature and resin type.

\*\* For tube format film (LFT), the width in inches is measured as the envelope's width, which can be unfolded to double the size.



## SV2000

SV2000 is a multi-layered nylon film engineered to maintain conformability across diverse environmental conditions. Its unique properties enable the reduction of pleats in intricate parts, resulting in time savings and mitigating the risk of leaks.

**Application:** Autoclave cure cycles  
**Resin:** Polyester, Vinyl ester, Epoxy and Phenolic\*

PRODUCT CODE	DESCRIPTION	THICKNESS	FORMAT	WIDTH (INCHES)	LENGTH (FEET)
834044	VF-SV2000-51-965-305-LFT	2 mil	LFT	38	1000
834046	VF-SV2000-51-1270-305-LFT	2 mil	LFT	50	1000
834048	VF-SV2000-51-1575-305-LFT	2 mil	LFT	62	1000
834042	VF-SV2000-51-1828-305-LFT	2 mil	LFT	72	1000
834043	VF-SV2000-51-952-305-LTX	2 mil	LTX	74 (open)	1000
834045	VF-SV2000-51-1257-305-LTX	2 mil	LTX	98 (open)	1000
834047	VF-SV2000-51-1562-305-LTX	2 mil	LTX	122 (open)	1000
834041	VF-SV2000-51-1816-305-LTX	2 mil	LTX	142 (open)	1000
834007	VF-SV2000-51-914-305-SHT	2 mil	SHT	36	1000
232393	VF-SV2000-51-1219-305-SHT	2 mil	SHT	48	1000
232082	VF-SV2000-51-1524-305-SHT	2 mil	SHT	60	1000
834049	VF-SV2000-51-1778-305-SHT	2 mil	SHT	70	1000

COLOR	TENSILE
PINK	15,000 PSI
ELONGATION	MAX USE TEMP.
400%	400 F / 204 C

Available in 2 mil thicknesses up to 3.6 meters wide in standard sheet, v-sheet and lay flat tube formats.

\* Application of phenolic resin is feasible but necessitates validation on a case-by-case basis, primarily considering factors such as temperature and resin type.

\*\* For tube format film (LFT), the width in inches is measured as the envelope's width, which can be unfolded to double the size.



# Bagging Film



## HS8171 QUICK DRAW- EMBOSSED

HS8171 Quick Draw is fabricated from the same co-extruded modified nylon film as standard HS8171, but with an added embossed textured pattern designed for effective air evacuation during compaction or de-bulking processes. It has undergone qualification according to numerous Aerospace manufacturer specifications. Depending on the geometry and application requirements, this product offers potential cost savings for customers, as it replaces the need for separate bagging film, breather, or release film, streamlining the process into a single item.

**Application:** Compaction or de-bulk

**Resin of the main application:** Polyester, Vinyl ester, Epoxy, Phenolic and BMI

PRODUCT CODE	DESCRIPTION	THICKNESS	FORMAT	WIDTH (INCHES)	LENGTH (FEET)
676352	VF-HS8171QD-51-1524-152-SHT	2 mil	SHT	60	500
676349	VF-HS8171QD-51-3048-152-SHT	2 mil	SHT	120	500

Available in 2 and 3 mil thicknesses up to 3.048 meters wide in standard sheet format.

COLOR	TENSILE
GREEN	14000
ELONGATION	MAX USE TEMP.
415%	400 F / 204 C



## SV250

The SV250 is a polyurethane film known for its exceptional conformability, making it ideal for applications where flexibility and elongation are crucial, particularly in complex geometries. Film primarily used for debulking purposes, but can also be employed during the curing process, especially in instances of low-temperature processing.

**Application:** Compaction or de-bulk

**Resin of the main application:** Epoxy (cure application), Polyester, Vinyl ester, Phenolic and BMI

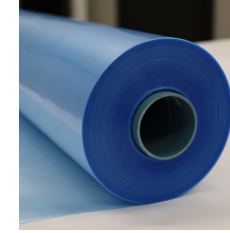
PRODUCT CODE	DESCRIPTION	THICKNESS	FORMAT	WIDTH (INCHES)	LENGTH (FEET)
676555	VF-SV250-51-1524-305-LTX	2 mil	LTX	120 (Open)	1000
676352	VF-SV250-51-1524-610-SHT	2 mil	SHT	60	2000

Available in 1.5 and 2 mil thicknesses up to 3,05 wide without seams & wider widths by heat seaming two larger bags together.

\* Due to its composition as a polyurethane film, it requires the use of a specialized sealing tape, such as VS2042.

COLOR	TENSILE
LIGHT BLUE	11,000 PSI
ELONGATION	MAX USE TEMP.
500%	275 F / 135 C

# Bagging Film



## 205B

The film incorporates a polyethylene surface and a polyamide interior, achieving a balance between properties and cost-effectiveness. Additionally, the presence of polyethylene on the surface reduces the influence of humidity on its performance. This film is primarily engineered for the production of large parts and has been shown to work well in low humidity environment.

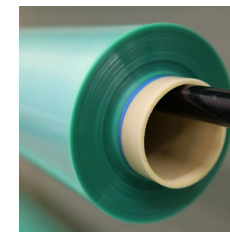
**Application:** Wet lay-up and infusion processes

**Resin:** Polyester, Vinyl ester and Epoxy

PRODUCT CODE	DESCRIPTION	THICKNESS	FORMAT	WIDTH (INCHES)	LENGTH (FEET)
700293	VFS-205B-80-2000-200-LTX	3 mil	LTX	157 (Open)	656
701212	VFS-205B-80-2250-160-GSC	3 mil	GSC	177 (Open)	525
699793	VFS-205B-75-3000-125-GSC	3 mil	GSC	236 (Open)	410
700288	VFS-205B-80-4000-80-GSC	3 mil	GSC	315 (Open)	262
699795	VFS-205B-80-5000-75-GSC	3 mil	GSC	393 (Open)	246
700289	VFS-205B-80-6000-75-GSC	3 mil	GSC	472 (Open)	246
699796	VFS-205B-80-8000-65-GSC	3 mil	GSC	630 (Open)	213

Available in 3 mil thicknesses up to 16 meters wide without seams and wider widths by heat seaming two larger bags together.

COLOR	
BLUE	
TENSILE TRANSVERSE	
6500 PSI	
ELONGATION	MAX USE TEMP.
600%	245 F / 120 C



## 200G

The film incorporates a polyethylene surface and a polyamide interior, achieving a balance between properties and cost-effectiveness. Additionally, the presence of polyethylene on the surface reduces the influence of humidity on its performance. This film is primarily engineered for the production of large parts.

**Application:** Wet lay-up and infusion processes

**Resin:** Polyester, Vinyl ester and Epoxy

PRODUCT CODE	DESCRIPTION	THICKNESS	FORMAT	WIDTH (INCHES)	LENGTH (FEET)
832016	VF-200G-75-2000-150-LTX	3 mil	LTX	157 (Open)	492
831768	VFS-200G-80-3000-125-CSC	3 mil	CSC	236 (Open)	410
832610	VFS-200G-80-4000-80-CSC	3 mil	GSC	315 (Open)	262
690309	VF-200G-80-5000-75-GSC	3 mil	GSC	393 (Open)	246
695112	VFS-200G-80-6000-75-GSC	3 mil	GSC	472 (Open)	246
676238	VF-200G-75-8000-40-GSC	3 mil	GSC	630 (Open)	131

Available in 3 mil thicknesses up to 16 meters wide without seams and wider widths by heat seaming two larger bags together.

Film with a width of up to 8 meters has lower prices.

COLOR	
GREEN	
TENSILE TRANSVERSE	
6500 PSI	
ELONGATION	MAX USE TEMP.
500%	245 F / 120 C

# Breather



Breather fabrics are nonwoven materials made from polyester or nylon fibers, with some options available that include fire retardant (FR) additives. FR variants are recommended for use in non-inert curing atmospheres and meet vertical burn test requirements. These fabrics serve dual functions: they provide an airflow path within vacuum infusion processes and absorb excess resin extracted from the laminate under vacuum. Additionally, they are utilized in prepreg debulking applications to facilitate air removal. All breather fabrics are highly conformable, allowing them to be easily molded to fit complex parts.

**Application:** Infusion, oven and autoclave cure cycles  
**Resin:** Polyester, Vinyl ester, Epoxy, Phenolic and BMI

FABRIC	COLOR	MAX USE TEMP.	WEIGHT RANGE
POLYESTER	WHITE	204 C / 400 F	4 OZ UP TO 20 OZ
NYLON	WHITE	232 C / 450 F	4 OZ UP TO 13 OZ

## BREATHER APPLICATION SUMMARY

PRODUCT CODE	STANDARD PRODUCT	CONSTRUCTION	WEIGHT	STANDARD WIDTH	STANDARD LENGTH
676172	BR-A3000-WHT-136-1524-91	Polyester	4 oz	60 inch	100 yards
676176	BR-A3000-WHT-237-1524-46	Polyester	7 oz	60 inch	50 yards
676170	BR-RC3000-WHT-339-1524-46	Polyester	10 oz	60 inch	50 yards
232325	BR-RC3000-WHT-678-1524-23	Polyester	20 oz	60 inch	25 yards
232515	BR-A3000FR-WHT-136-1524-91	Polyester with FR	4 oz	60 inch	100 yards
232892	BR-A3000FR-WHT-237-1524-46	Polyester with FR	7 oz	60 inch	50 yards
676175	BR-RC3000NB-WHT-203-1524-46	Nylon	6 oz	60 inch	50 yards
232894	BR-RC3000NB-WHT-339-1524	Nylon	10 oz	60 inch	50 yards
691476	BR-RC3000NB-WHT-441-1524	Nylon	13 oz	60 inch	50 yards

Available in a standard size of 60" wide with wider widths available by special order.

# Flow Mesh & Combination

## FLOW MEDIA & COMBINATION APPLICATION SUMMARY

PRODUCT	MATERIAL	UPPER USE TEMPERATURE °C/°F	FUNCTION			DENSITY GSM / OZ/ YD²	APPROX. COST / M2
			PEEL PLY	RELEASE	FLOW MEDIA		
Vi10	PP	150 / 300			X	100 / 3	\$
Vi5	PET	200 / 392			X	100 / 3	\$\$
Infuply 2	HDPE + PE	120/248		X	X	175 / 5.16	\$\$\$
Combi 1	HDPE + PE + PA	120/248	X	X	X	260 / 7.67	\$\$\$\$
COMPOFLEX® 150	PP	145 / 293	X	X		150 / 4.4	\$\$\$
COMPOFLEX® SB RF3	PP + PE	145 / 293	X	X	X	335 / 9.9	\$\$\$\$\$



### Vi10

Vi10 is an extruded polypropylene mesh with a diamond pattern ideally suited for air evacuation in vacuum infusion processes. Its softness does not damage vacuum bags during use and its geometric pattern allows for consistent controlled resin flow across a laminate.

**Application:** Infusion  
**Resin:** Polyester, Vinyl ester and Epoxy.

PRODUCT CODE	DESCRIPTION	WIDTH (INCHES)	LENGTH (FEET)
676151	FM-VI10-GRN-112-1040-107-SHT	41	107

Available in a standard size of 41" wide with custom narrow width slitting available. Wider widths are available.

COLOR	WEIGHT
GREEN	3 OZ/YD2
MATERIAL	MAX USE TEMP.
POLYPROPYLENE	300 F / 149 C



### Vi5

Vi5 is a knitted polyester mesh in a 3D pattern designed for use in the vacuum assisted resin infusion. Due to its composition and compatibility with polyester and Vinyl ester resins, it can be applied in the middle of glass fiber layers. It is ideal for use in areas of complex geometry and high temperature applications.

**Application:** Infusion  
**Resin:** Polyester, Vinyl ester and Epoxy.

PRODUCT CODE	DESCRIPTION	WIDTH (INCHES)	LENGTH (FEET)
698352	FM-VI5-WHT-100-1200-100	47	328

Available in a standard size of 47" wide with wider widths available by special order.

COLOR	WEIGHT
WHITE	3 OZ/YD2
MATERIAL	MAX USE TEMP.
PET	392 F / 200 C

# Flow Mesh & Combination



## INFUPLY2

InfuPLY2 is a combination of high comfortability Vi1 knitted infusion mesh and perforated release film A2400 with P16 perforation pattern. It reduces layup time and complexity and strips clean from the laminate surface.

**Application:** Infusion  
**Resin:** Polyester, Vinyl ester and Epoxy

PRODUCT CODE	DESCRIPTION	WIDTH (INCHES)	PERFORATION
690307	INFUPLY2 VI1+A2400OHP16-1450-100	57	P16 Perforated Release Film

Available in a standard width of 57" wide

COLOR	WEIGHT
BLUE MESH / ORANGE FILM	5.16 OZ/YD2
MATERIAL	MAX USE TEMP.
POLYETHYLENE	248 F / 120 C



## COMBI1

Vac-Ply Combi1 combines perforated release film, knitted infusion mesh and nylon peel ply all in one material. It reduces lay up time and complexity and easily conforms to complex parts. Its multi-layer construction can strip from the cured part in two different ways. One by pulling the release film and mesh, leaving the peel ply as temporary protection for the laminate, or by removing all three layers.

**Application:** Infusion  
**Resin:** Polyester, Vinyl ester and Epoxy

PRODUCT CODE	DESCRIPTION	WIDTH (INCHES)	PERFORATION
232698	CM-COMBI1-VI1+A2400HP16 A100PS-1560-100	61	P16 Perforated Release Film

Available 61 inch wide rolls with the different layers staggered to allow for easier separation if desired.

COLOR	WEIGHT
BLUE MESH / ORANGE FILM / WHITE RED STRIPED PEEL PLY	7.67 OZ/YD2
MATERIAL	MAX USE TEMP.
POLYETHYLENE MESH & RELEASE FILM WITH NYLON PEEL PLY	248 F / 120 C



## COMPOFLEX® 150

Compoflex 150 is a peel ply and release film, used to control flow rate and release consumables from a composite laminate. Compoflex® 150 generates a highly smooth surface, ideal for painting composite laminate.

**Application:** Infusion and oven  
**Resin:** Polyester, Vinyl ester, epoxy and phenolic

PRODUCT CODE	DESCRIPTION	WIDTH (INCHES)
581329	COMPOFLEX 150 104114 1.52 X 61M 4438019 92.72SM/RL	60

Custom narrow width slitting and wider widths are available.

COLOR	WEIGHT
WHITE	4.4 OZ / SQUARE YD
MATERIAL	MAX USE TEMP.
POLYPROPYLENE	293 F / 145 C

# Flow Mesh & Combination



## COMPOFLEX® SB RF3

Compoflex® SB RF 3 is a peel ply, release film, and flow mesh used to control the flow rate and release consumables from a composite laminate. It generates a highly rough and textured surface, ideal for secondary bonding and painting composite laminates. Compoflex® SB can reduce or eliminate the need for sanding or abrasion. Best results are achieved with epoxy resin, but we always recommend testing.

**Application:** Infusion  
**Resin:** Polyester, Vinyl ester, epoxy and phenolic

PRODUCT CODE	DESCRIPTION	WIDTH (INCHES)
662058	COMPOFLEX SB RF 3 1.52M X 61M 124241 92.72SM/RL	60

Custom narrow width slitting and wider widths are available.

COLOR	WEIGHT
WHITE AND YELLOW	9.8 OZ / SQUARE YD
MATERIAL	MAX USE TEMP.
POLYPROPYLENE- AND POLYETHYLENE	293 F / 145 C

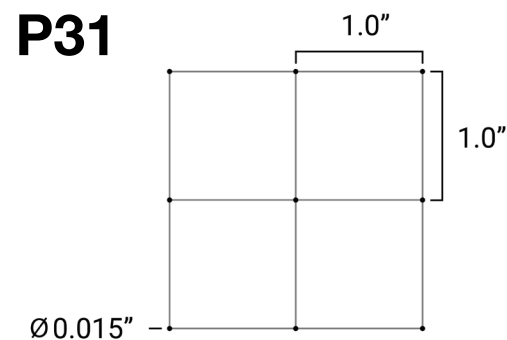
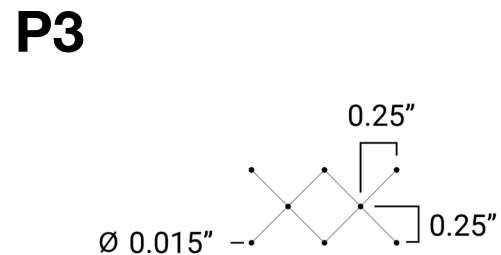
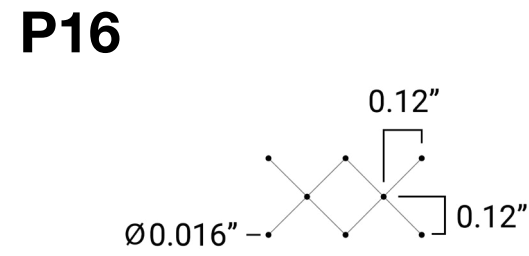
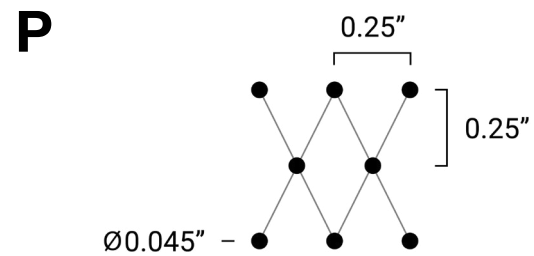


# Release Film

## RELEASE FILM APPLICATION SUMMARY

PRODUCT	MATERIAL	UPPER USE TEMPERATURE °C/°F	TENSILE STRENGTH MPA	ELONGATION %	CONFORM-ABILITY	RELEASE PERFORM-ANCE	APPROX. COST/M2	APPLICATION	MARKET	RESIN
A2300	PP	150°C/302°F	TD:5801 / MD:9427 PSI	TD:800 / MD:500 %	++++	+	\$\$	Infusion, oven and autoclave cure cycles	All	Polyester, Vinyl ester, Epoxy and Phenolic
A2400	PE	120°C/248°F	6526 PSI	560%	++++	++	\$	Infusion	Marine and Wind	Polyester, Vinyl ester and Epoxy
A2500	PMP	204/ 400	4351 PSI	285%	+	+++	\$\$	Autoclave cure cycles	Aerospace, Defense	Polyester, Vinyl ester, Epoxy, Phenolic and BMI
A5000	FEP	260 / 500	3500 PSI	300%	++++	++++	\$\$\$\$	Autoclave cure cycles	Aerospace, Defense	Polyester, Vinyl ester, Epoxy, Phenolic and BMI
A6200	ETFE	232 / 450	TD:6000 / MD:10000 PSI	350%	+++	+++	\$\$\$	Autoclave cure cycles	Aerospace, Defense	Polyester, Vinyl ester, Epoxy, Phenolic and BMI
MR1	PTFE	316 / 600	4300 PSI	400%	+++++	+++++	\$\$\$\$\$	Autoclave cure cycles	Automotive, Aerospace, Defense	Polyester, Vinyl ester, Epoxy, Phenolic and BMI

## COMMON PATTERNS



Other perforations are also available. Please contact the technical team for further support.

# Release Film



## A2300

A2300 is a cast co-extruded polypropylene based film specifically developed for release applications in composite infusions. Additionally, in the wind blade repair market, A2300 non perforated works as a “bagging film” primarily utilized for small repairs using the dry lay-up process.

**Application:** Infusion, oven and autoclave cure cycles  
**Resin:** Polyester, Vinyl ester, Epoxy and Phenolic

PRODUCT CODE	DESCRIPTION	THICKNESS	FORMAT	WIDTH (INCHES)	LENGTH (FEET)
676355	RF-A2300-ORG-30-1524-305-P3-SHT	1 mil	SHT	60	1000
676346	RF-A2300-ORG-30-1600-305-NP-NP-FNS	1 mil	SHT	63	1000

Available in 1 and 2 mil thicknesses up to 78 in. wide. Custom narrow width slitting is available to 2 in. minimum. Available with a range of perforation patterns.

COLOR	
ORANGE	
TENSILE TRANSVERSE	TENSILE MACHINE DIRECTION
5801 PSI	9427 PSI
ELONGATION	MAX USE TEMP.
500% / 800%	302F / 150 C



## A2400

A2400 is a blown co-extruded polyethylene-based film specifically developed for release applications in composite infusions.

**Application:** Infusion  
**Resin:** Polyester, Vinyl ester and Epoxy

PRODUCT CODE	DESCRIPTION	THICKNESS	FORMAT	WIDTH (INCHES)	LENGTH (FEET)
685028	RF-A2400-ORG-25-1550-500-HOT-P16-FNS-SHT	1 mil	SHT	61	1,640

Available in 1 and 2 mil thicknesses up to 78" wide. Custom narrow width slitting is available to 2" minimum. Available with a range of perforation patterns.

COLOR	
ORANGE & RED	
TENSILE TRANSVERSE	TENSILE MACHINE DIRECTION
6528 PSI	6528 PS
ELONGATION	MAX USE TEMP.
560%	248 F / 120 C



## A2500

A2500 is a Polyetheretherketone (PMP) release film used in the processing of flat or simple curvature components. It offers a low-cost alternative to other high-temperature Aerospace-qualified films and PFAS free, ensuring excellent release from all common resin systems.

**Application:** Autoclave cure cycles  
**Resin:** Polyester, Vinyl ester, Epoxy, Phenolic and BMI

PRODUCT CODE	DESCRIPTION	THICKNESS	FORMAT	WIDTH (INCHES)	LENGTH (FEET)
843148	RF-A2500-RED-30-1350-400-NP-NP-FNS-SHT	1.5 mil	SHT	53	1,312

Available in 1.5 and 2 mil thicknesses up to 80" wide. Custom narrow width slitting is available to 2" minimum. Available with a range of perforation patterns.

COLOR	
PINK AND BLUE	
UPPER USE TEMPERATURE °C/°F	
204/400	
TENSILE STRENGTH MPA	ELONGATION %
4351 PSI	285%

# Release Film



## A5000

A5000 is a high-temperature fluoropolymer release film based on poly(tetrafluoroethylene-co-hexafluoropropylene) - FEP. A staple in the Aerospace industry for decades, A5000 boasts numerous Aerospace OEM approvals. Additionally, this film can be treated to make one side bondable for use in conjunction with reusable silicone bagging.

**Application:** Autoclave cure cycles

**Resin:** Polyester, Vinyl ester, Epoxy, Phenolic and BMI

PRODUCT CODE	DESCRIPTION	THICKNESS	FORMAT	WIDTH (INCHES)	LENGTH (FEET)
232544	RF-A5000-VLT-25-1524-183-NP-NP-FNS	1 mil	SHT	60	600
836604	RF-A5000-VLT-25-1524-183-PIN-P3-FNS-SHT	1 mil	SHT	60	600
836605	RF-A5000-VLT-25-1524-183-PUN-P-FNS-SHT	1 mil	SHT	60	600

COLOR	TENSILE
VIOLET, WHITE, CLEAR, & RED	3500 PSI
ELONGATION	MAX USE TEMP.
300%	500 F / 260 C

Available in 1 and 2 mil thicknesses up to 80" wide. Custom narrow width slitting is available to 2" min. Available with a range of perforation patterns.



## A6200

A6200 is a high temperature fluoropolymer release film based on Ethylene Tetrafluoroethylene (ETFE). This film is approved by various Aerospace OEMs.

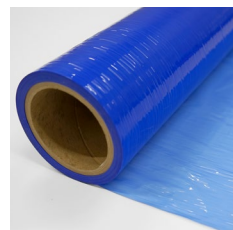
**Application:** Autoclave cure cycles

**Resin:** Polyester, Vinyl ester, Epoxy, Phenolic and BMI

PRODUCT CODE	DESCRIPTION	THICKNESS	FORMAT	WIDTH (INCHES)	LENGTH (FEET)
698253	RF-A6200-BLU-25-1525-127-NP-NP-FNS-SHT	1 mil	SHT	60	417
696516	RF-A6200-BLU-25-1525-127-PIN-P3-FNS-SHT	1 mil	SHT	60	417

COLOR	TENSILE
BLUE, CLEAR, & RED	TD: 6,000/ MD:10,000 PSI
ELONGATION	MAX USE TEMP.
350%	503 F / 262 C

Available in .0005, .0006, .001 and .002" thicknesses. Custom narrow width slitting is available to 2" min. Available with a range of perforation patterns.



## MR1

MR1 is a high-performance fluoropolymer film based on polytetrafluoroethylene (PTFE), renowned for delivering superior performance and surface finish on cured laminates.

**Application:** Autoclave cure cycles

**Resin:** Polyester, Vinyl ester, Epoxy, Phenolic, BMI and Polyimide

PRODUCT CODE	DESCRIPTION	THICKNESS	FORMAT	WIDTH (INCHES)	LENGTH (FEET)
676156	RF-MR1-BLU-25-1219-152-NP-NP-FNS-SHT	1 mil	SHT	48	500

COLOR	TENSILE
BLUE, RED, & BEIGE	4,300 PSI
ELONGATION	MAX USE TEMP.
400%	599 F / 315 C

Available in 1 and 2 mil thicknesses up to 48" wide. Custom narrow width slitting is available to 2" min. Available with a range of perforation patterns.

# Peel Ply & Release Fabrics

## PEEL PLY APPLICATION SUMMARY

PRODUCT	MATERIAL	UPPER USE TEMPERATURE °C/°F	FABRIC WEIGHT GSM / OZ/YD <sup>2</sup>	ROUGHNESS	EASE OF REMOVAL	APPROX. COST / M <sup>2</sup>
A100PS	Nylon 66	204 / 400	85 / 2.5	+++	++	\$
B100	Nylon 66	204 / 400	58/1.7	+	++	\$\$
60001	Polyester	204 / 400	85 / 2.5	+++	+	\$\$\$
60004 SRB	Polyester with release coating	204 / 400	81.4/2.4	++	++++	\$\$\$\$
B4444	Nylon 66 with release coating	204 / 400	60/1.77	+	++++	\$\$\$\$

## RELEASE FABRIC APPLICATION SUMMARY

PRODUCT	MATERIAL	UPPER USE TEMPERATURE °C/°F	THICKNESS	POROUS	EASE OF REMOVAL	APPROX. COST / M <sup>2</sup>
200TFP	Fiberglass coated PTFE - Porous	290 / 550	3 mil	Yes	++++	\$
200TFNP	Fiberglass coated PTFE - Non Porous	290 / 550	3 mil	No	++++	\$\$
Toolcoat 805 - A	Fiberglass coated PTFE + acrylic adhesive	204 / 400	5 mil	No	++++	\$\$\$
Toolcoat 805 - S	Fiberglass coated PTFE + Silicone adhesive	290 / 550	5 mil	No	++++	\$\$\$\$
Toolcoat 807 - A	Fiberglass coated PTFE + acrylic adhesive	204 / 400	7 mil	No	++++	\$\$\$\$
Toolcoat 807 - S	Fiberglass coated PTFE + Silicone adhesive	290 / 550	7mil	No	++++	\$\$\$\$\$

\*The price comparison in the table is not compared with other product classes.



# Peel Ply & Release Fabrics



Narrow width hot knife slitting is available.

## A100PS and A100PS ECO

A100PS is a peel ply made from Nylon 66, featuring a natural color with red strips for easy visibility during removal. It creates a textured surface on the composite part, which is ideal for secondary operations such as bonding, painting or finishing. The peel ply works well with epoxy resin, providing adequate surface roughness for strong adhesive bonding. However, when used with prepreg and polyester resin, its performance may vary, necessitating case-by-case testing to ensure compatibility and effectiveness. It strips cleanly from the cured part and is typically supplied with high visibility red tracer yarn to minimize the risk of leaving on the finished part. A100PS ECO has similar performance and technical specifications as standard A100PS but it is produced from sustainable bio-sourced raw materials.

**Application:** Infusion and oven cure  
**Resin:** Polyester, Vinyl ester and Epoxy

PRODUCT CODE	DESCRIPTION	CONSTRUCTION	TEMP.	WEIGHT
676141	PP-A100PSI-WHT-85-1524-274 NA 2.5 OZ 60"X300YD RED STRIP	Nylon with red tracer-course weave	400 F	2.5 OZ / SY
835592	PP-A100ECOPSI-WHT-85-1524-274-NA	Nylon with red tracer-course weave	400 F	2.5 OZ / SY



Narrow width hot knife slitting is available.

## B100

B100 is a premium Nylon 66 peel ply with a gram weight of 1.7 oz/square yard. This lightweight fabric imparts a fine surface finish on composite parts, providing a finer texture compared to heavier peel plies. Its fine weave strips cleanly from the cured part. When using B100 with phenolic resin or prepreg systems, it's important to note that the acidic components in the catalyst can degrade nylon peel ply.

**Application:** Infusion, oven and autoclave cure  
**Resin:** Polyester, Vinyl ester and Epoxy

PRODUCT CODE	DESCRIPTION	CONSTRUCTION	TEMP.	WEIGHT
676138	PP-B100-NAT-60-1524-91-NA 1.77 OZ 60" X 300'	NYLON- FINE WEAVE	400 F	1.7 OZ / SY



Narrow width hot knife slitting is available.

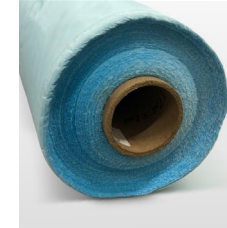
## 60001

60001 is a polyester peel ply with a gram weight of 2.5 oz/square yard, designed to create a textured surface for secondary operations. Its composition allows for compatibility with phenolic resin and is approved by various Aerospace OEMs. Available in different variations, it includes options with a high release polymer coating and a very low porosity finish, catering to diverse manufacturing needs.

**Application:** Oven and autoclave cure cycles  
**Resin:** Epoxy, Phenolic and BMI

PRODUCT CODE	DESCRIPTION	CONSTRUCTION	TEMP.	WEIGHT
678862	PP-60001-NAT-85-1524-274 NA 2.5OZ 60" X 900'	Polyester - Medium finish	400 F	2.5 OZ / SY

# Peel Ply & Release Fabrics



Narrow width hot knife slitting is available.

## 60004 SRB

60004 SRB is a polyester peel ply featuring Super Release Blue (SRB) for effortless release, weighing 2.4 oz/square yard. This product creates a textured surface ideal for secondary operations. The specialized release agent enables much easier removal compared to standard peel ply, simplifying manufacturing processes and reducing the risk of warping or altering the parts.

**Application:** Infusion, oven and autoclave cure cycles  
**Resin:** Polyester, Vinyl ester, Epoxy, Phenolic and BMI

PRODUCT CODE	DESCRIPTION	CONSTRUCTION	TEMP.	WEIGHT
676241	PR-60004SRB-BLU-82-1524-92 SIL-P-NA 2.35 OZ 60" X 100 YD	Polyester - fine weave w/ release coating	400 F	2.4 OZ / SY



Narrow width hot knife slitting is available.

## B4444

B4444 is a silicone-coated lightweight nylon peel ply with a gram weight of 1.7 oz/square yard. Coated with a heat-cured silicone release solution, it facilitates easy removal from cured laminates. While the release solution is fully polymerized, there is a minimal potential for slight transfer onto the component. Therefore, it is recommended to prepare the laminate adequately before bonding or painting by lightly abrading or sanding the surface, followed by cleaning with an approved solvent (as per industry standards).

**Application:** Infusion, oven and autoclave cure cycles  
**Resin:** Polyester, Vinyl ester and Epoxy

PRODUCT CODE	DESCRIPTION	CONSTRUCTION	TEMP.	WEIGHT
676142	PR-B4444-GRN-60-1524-91 SIL-P-NA 1.75 OZ 60" X 300'	SILICONE COATED NYLON	400 F	1.77 OZ / SY



Narrow width hot knife slitting is available.

## 200TFP and 200TFNP

200TFP or 200TFNP is a woven glass fiber fabric coated with PTFE (Polytetrafluoroethylene), distinguished by one being porous (200TFP) and the other non-porous (200TFNP). These fabrics are designed for applications up to 550°F and ensure effortless release of cured laminates. By preventing adhesion between the composite material and the mold surface, they enable clean removal without damage. Additionally, they contribute to achieving desired surface textures or finishes in the final product. The porosity of 200TFP facilitates the evacuation of excess resin and volatiles during the manufacturing process.

**Application:** Infusion, oven and autoclave cure cycles  
**Resin:** Polyester, Vinyl ester, Epoxy, Phenolic and BMI

PRODUCT CODE	DESCRIPTION	CONSTRUCTION	TEMP.	WEIGHT
678144	PR-200TFNP-TAN-76-965-91 TFE-N-NA 2.25 OZ 38" X 100 YD	PTFE COATED PLAIN WEAVE FIBERGLASS	550 F	1.8 - 2.1 OZ / SY
676145	PR-200TFP-BRN-76-1270-91 TFE-P-NA 2.25 OZ 50 X 300'	PTFE COATED PLAIN WEAVE FIBERGLASS	550 F	1.8 - 2.1 OZ / SY

# Peel Ply & Release Fabrics



Narrow width hot knife slitting is available.

## TOOLCOAT (TC805 / TC807)

Toolcoat is a self-adhesive tool release film made of fiberglass coated with non-porous PTFE, designed to facilitate the separation of composite parts from molds or tools. It enables easy removal of cured parts without surface damage, simplifies application, and reduces labor. Inert to most chemicals and environmental factors, it comes in thicknesses of 805 S/A at 0.005 inches and 807 S/A at 0.007 inches. Both variants offer silicone and acrylic adhesives, supporting different maximum temperatures.

**Application:** Infusion, oven and autoclave cure cycles  
**Resin:** Polyester, Vinyl ester, Epoxy, Phenolic and BMI

PRODUCT CODE	DESCRIPTION	ADHESIVE TYPE	TEMP.	TOTAL THICKNESS
232933	PR-TC805A-BRN-127-914-16 TFE-N-AC 3.75 OZ X 36" X 52'	Acrylic Adhesive on PTFE Coated Glass	400 F	.005"
232930	PR-TC807A-BRN-178-914-16.5 TFE-N-AC 5.25 OZ X 36" X 54'	Acrylic Adhesive on PTFE Coated Glass	400 F	.007"
698255	PR-TC805S-BRN-127-914-33 TFE-N-SL 3.75 OZ 36" X 108'	Silicone Adhesive on PTFE Coated Glass	550 F	.005"
232933	PR-TC807S-BRN-178-914.16.5 TFE-N-SL 5.25 OZ 36" X 54'	Silicone Adhesive on PTFE Coated Glass	550 F	.007"

# Tapes



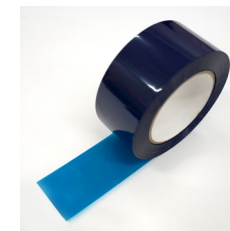
## VS2042

Vac Seal 2042 is high temperature multi-purpose butyl rubber sealant tape suitable for a wide range of composite applications. Its high tack, easy, residue free release makes it ideal for use with both composite and metal tooling applications.

**Application:** Infusion, oven and autoclave cure cycles  
**Resin:** Polyester, Vinyl ester, Epoxy, Phenolic and BMI.

PRODUCT CODE	DESCRIPTION	UOM	WIDTH (INCHES)	LENGTH (FEET)
676148	ST-VS2042-YLW-3.18-12.7-7.62	RL	1/2	25

COLOR	BASE MATERIAL
YELLOW	BUTYL RUBBER
TACK LEVEL	MAX USE TEMP.
HIGH	400 F / 204 C



## FT1

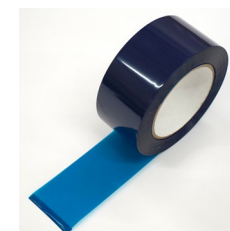
Flashtape 1 is a polyester-backed pressure-sensitive silicone adhesive tape utilized for temporarily securing vacuum infusion materials such as peel ply, breather, or release film in place during the manufacturing process. It cleanly strips off after use, leaving no residue behind.

**Application:** Infusion, oven and autoclave cure cycles  
**Resin:** Polyester, Vinyl ester, Epoxy, Phenolic, BMI and Polyimide

PRODUCT CODE	DESCRIPTION	UOM	WIDTH (INCHES)	LENGTH (FEET)
676184	AT-FT1-BLU-64-12.7-66-SL	Roll	.5	216
676182	AT-FT1-BLU-64-25.4-66-SL	Roll	1	216
676183	AT-FT1-BLU-64-50.8-66-SL	Roll	2	216

COLOR	ADHESIVE TYPE
BLUE	SILICONE
ELONGATION	MAX USE TEMP.
100%	400 F / 204 C

Available in standard widths of .5, 1 and 2". Also available with rubber based adhesives as FT1R



## FT2

Flashtape 2 is a more robust version than FT1, containing double the amount of polyester carrier. Its application is the same as the FT1 version, however, it is a stronger version and it should be used where extra strength is needed. It cleanly strips off after use, leaving no residue behind.

**Application:** Infusion, oven and autoclave cure cycles  
**Resin:** Polyester, Vinyl ester, Epoxy, Phenolic, BMI and Polyimide

PRODUCT CODE	DESCRIPTION	UOM	WIDTH (INCHES)	LENGTH (FEET)
676178	AT-FT2-BLU-88.9-25.4-66-SL	Roll	1	216
676186	AT-FT2-BLU-88.9-50.8-66-SL	Roll	2	216

COLOR	ADHESIVE TYPE
BLUE / GREEN	SILICONE
ELONGATION	MAX USE TEMP.
100%	400 F / 204 C

Available in standard widths of 1 and 2". Also available with rubber based adhesives as FT2R

# Tapes



## RAP HOLD 10

Rap Hold 10 is a double-sided adhesive tape which is ideally suited to applications where a temporary mounting is required. The natural rubber based adhesive is supported on a woven cotton carrier. It has good adhesion to a wide range of substrates and removes without any residue.

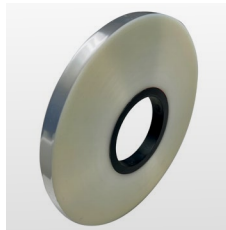
**Application:** Infusion, oven and autoclave cure cycles

**Resin:** Polyester, Vinyl ester, Epoxy, Phenolic, BMI and Polyimide

PRODUCT CODE	DESCRIPTION	UOM	WIDTH (INCHES)	LENGTH (FEET)
676218	AT-RH10-TAN-330-25.4-23-RB	Roll	1	75
830206	AT-RH10-TAN-330-50.8-23-RB	Roll	2	75

Available in standard widths of 1 and 2". A polyester based version is also available.

COLOR	ADHESIVE TYPE
WHITE	NATURAL RUBBER
	TEMP. RANGE
	5°F to 160°F / -15°C to 70°C



## RAP HOLD 1

Rap Hold 1 is a higher temperature double-sided adhesive tape which is ideally suited to applications where a temporary mounting is required. It features a polyester backing film with acrylic adhesive.

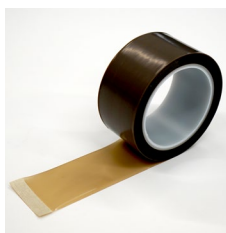
**Application:** Infusion, oven and autoclave cure cycles

**Resin:** Polyester, Vinyl ester, Epoxy, Phenolic, BMI and Polyimide

PRODUCT CODE	DESCRIPTION	UOM	WIDTH (INCHES)	LENGTH (FEET)
232953	AT-RH1-CLR-102-25.4-33-AC	Roll	1	108

Available in standard widths of 1 and 2". A rubber based adhesive version is also available.

COLOR	ADHESIVE TYPE
CLEAR	ACRYLIC
ELONGATION	MAX USE TEMP.
100%	400 F / 204 C



## VAC TAPE 102

Vac-Tape 102 is Skived PTFE tape with a high temperature pressure sensitive, cured silicone adhesive. Its main function is to eliminate the need for release agents and can help protect some tool substrates from aggressive matrices. It cleanly strips off after use, leaving no residue behind.

**Application:** Infusion, oven and autoclave cure cycles

**Resin:** Polyester, Vinyl ester, Epoxy, Phenolic, BMI and Polyimide

PRODUCT CODE	DESCRIPTION	UOM	WIDTH (INCHES)	LENGTH (FEET)
676181	AT-VAC-TAPE102-GRY-89-25.4-33-SL	Roll	1	108
676179	AT-VAC-TAPE102-GRY-89-50.8-33-SL	Roll	2	108
676180	AT-VAC-TAPE102-GRY-89-101.6-33-SL	Roll	4	108

Available in standard widths of 1, 2 and 4". An acrylic-based adhesive version is also available.

COLOR	ADHESIVE TYPE
GREY	SILICONE
ELONGATION	MAX USE TEMP.
150%	500 F / 260 C

# Tapes



## VAC-SHRINK ST2

Shrink Tape ST2 is a tough, flexible, heat-shrinkable polyester film. When wrapped around an object and heated, ST2 has the unique ability to shrink and apply pressure over the surface of composites. This simple method of pressure application is advantageous in many industries, including Advanced Composites, Aerospace, and Defense.

PRODUCT CODE	DESCRIPTION	UOM	WIDTH (INCHES)
683725	RF-ST2-CLR-51-51-91-NP-NP	Roll	2

ST2 is available uncoated (Type S) and release coated with a PTFE release coat (Type R).

COLOR
CLEAR
SHRINK %
20%
UPPER USE TEMPERATURE °C/°F
165/ 330

# Ancillaries



## AEROFIX 3

Aerofix3 is a spray adhesive designed specifically for use in composite manufacturing to secure dry fiber and consumables before the infusion process. Aerofix 3's formulation is based on polyester, making it compatible with Polyester and Vinyl ester resins and with some compatibility in epoxy resins. The key advantage of using Aerofix3 is that it does not affect the mechanical properties, such as short beam shear, of the final composite product. The standard Aerofix3 product is blue in color, making it easy to identify during production. It is also available in red and a high tack variant, which is mainly used in the Wind Energy market for its enhanced adhesion properties.

**Application:** Infusion, oven, RTM light, silicone bag

**Resin:** Polyester, Vinyl ester and Epoxy

PRODUCT CODE	DESCRIPTION	MOQ
696189	AEROFIX3 500ML SPRAY ADH 12/CS	12



## AUTOCLAVE HOSES

Our autoclave hoses are flexible vacuum hoses with a silicone jacket over inner convoluted metal bracing, featuring 1/4" FNPT brass male fittings and a standard 10' length (HS110103). Custom fittings and lengths are available. Medium and heavy-duty options withstand temperatures up to 450°F, ensuring reliable performance in high-temperature autoclave environments.

**Application:** Autoclave

**Resin:** Epoxy, Phenolic and BMI

PRODUCT CODE	DESCRIPTION	MOQ
841553	HS11013 10' HD VACUUM HOSE 450F	10 EACH



# Ancillaries



## RESIN INFUSION CONNECTOR- GROOVED BOTTOM

The cost-effective Resin Infusion Connector with a grooved bottom ensures efficient through-bag connections for use with spiral tubing. Made from a special material, this connector is reusable and easy to clean, allowing cured resin to be removed effortlessly. Available in various sizes, it optimizes the resin infusion process for a seamless and reliable setup.

**Application:** Infusion,  
**Resin:** Polyester, Vinyl ester and Epoxy

PRODUCT CODE	DESCRIPTION	MOQ
686193	PRC001 INFUSION CONNECTOR 1/2" HOLE GROOVED BOTTOM	10
686194	PRC002 INFUSION CONNECTOR 5/8" HOLE GROOVED BOTTOM	10
824682	PRC003 INFUSION CONNECTOR 3/4" HOLE GROOVED BOTTOM	10



## RESIN INFUSION CONNECTOR- FLAT BOTTOM

The Flat Bottom Resin Infusion Connector is designed for use with various resin feed systems. Made from a special material, this connector is reusable and easy to clean, allowing for effortless removal of cured resin. It provides a reliable and efficient solution for the resin infusion process lines.

**Application:** Infusion,  
**Resin:** Polyester, Vinyl ester and Epoxy

PRODUCT CODE	DESCRIPTION	MOQ
686701	PRC0012 INFUSION CONNECTOR 1/2" HOLE FLAT BOTTOM	10
689443	PRC0022 INFUSION CONNECTOR 5/8" HOLE FLAT BOTTOM	10
698440	PRC0032 INFUSION CONNECTOR 3/4" HOLE FLAT BOTTOM	10



## VACUUM PROBE/FROG

Through bag fittings to provide reliable resin supply. Maximum temperature use up to 400F.

**Application:** Autoclave  
**Resin:** Epoxy, Phenolic and BMI

PRODUCT CODE	DESCRIPTION	MOQ
684397	QP250 VAC VALVE 1/4NPT SET 1/4 TURN FROG 2.5 DIA	10
688661	TP250 THREADED PROBE 1/4 NPT 2.5"	10
841484	TP252 3-PCS SELF CUTTING THREADED	10
	TP253 3-PCS SELF CUTTING THREADED	10

# Ancillaries



## INFUSION VALVES

A polyoxymethylene double O-ring infusion valve available in various sizes outside diameter connections. Higher operating temperature range than comparable polyethylene (PE) infusion valves.

**Application:** Infusion  
**Resin:** Polyester, Vinyl ester and Epoxy

PRODUCT CODE	DESCRIPTION	MOQ
700947	IV10 10MM INFUSION VALVE 248F/120C MAX TEMP	20
700952	IV12 12MM INFUSION VALVE 248F/120C MAX TEMP	20
703051	IV18 18MM INFUSION VALVE 248F/120C MAX TEMP	20



## VACUUM REGULATOR/VACUUM GAUGE

VG250 is a liquid filled vacuum gauge designed to provide accurate vacuum readings. VG250 has a male 1/4" NPT fitting and a 0 to -30 in Hg pressure gauge. Works with PD3 QD250 fittings and other 1/4" NPT products.

**Application:** Infusion  
**Resin:** Polyester, Vinyl ester and Epoxy

PRODUCT CODE	DESCRIPTION	MOQ
684898	VR250 VAC REGULATOR ASMBLY 1/4 M NPT	1
688660	VG001 LIQUID FILLED VAC GAUGE 1/4 NPT BOTTOM MOUNT	1



## VMS3

Vac-Ply VMS3 is a revolutionary vacuum medium strip, which opens new possibilities in infusion network design. VMS3 reduces the risk of dry spots or incomplete wet out by drawing air and volatiles from the laminate throughout the infusion process, without drawing any resin into the vacuum line. It also reduces the risk of rework and eliminates resin waste, as well as optimizing process control and part quality. VMS3 can be placed directly on the part surface, and is self-releasing.

**Application:** Infusion and prepreg  
**Resin:** Polyester, Vinyl ester and Epoxy

PRODUCT CODE	DESCRIPTION	WIDTH (INCHES)
698254	CM-VMS3-HT-150-120-SHT	6

Custom narrow width slitting and wider widths are available.

COLOR	WEIGHT
ORANGE RELEASE / WHITE OUTSIDE	3 OZ / SQUARE YD
MATERIAL	MAX USE TEMP.
POLYPROPYLENE	285 F / 140 C

# Tubing & Spiral Wrap



## POLY TUBING

Poly tubing, made from hard polyethylene, is crucial in the vacuum infusion process for composites. It serves two main applications: transport resin from the supply container to the mold and vacuum air the tubing connects the mold to the vacuum pump, efficiently removing air from the part to create the necessary vacuum pressure. It is designed to be robust enough to avoid collapse under pressure in a typical vacuum cycle.

**Application:** Infusion

**Resin:** Polyester, Vinyl ester and Epoxy

PRODUCT CODE	DESCRIPTION	ROLL LENGTH (FT.)
603410	1/4 X 3/8 TUBING POLYETHYLENE, NATURAL, 500' PER SPOOL	500'
648353	3/8 X 1/2, TUBING POLYETHYLENE, NATURAL, 300' PER SPOOL	300'
612573	1/2 X 5/8, TUBING POLYETHYLENE, NATURAL, 200' PER SPOOL	200'
602176	5/8 X 3/4, TUBING POLYETHYLENE, NATURAL, 100' PER SPOOL	100'

*Additional inside and outside product diameters available. Additional roll length options available.*



## SPIRAL TUBING

A spiral tubing is a polyethylene tubing used along the edges of the mold to facilitate the even distribution of resin. As vacuum pressure pulls the resin through the laminate, the spiral wrap ensures consistent flow and minimizes air entrapment. This results in a high-quality, void-free composite part. It is designed to be robust enough to avoid collapse under pressure in a typical vacuum cycle.

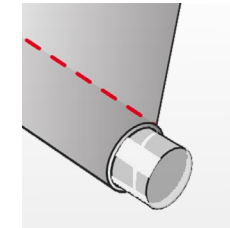
**Application:** Infusion

**Resin:** Polyester, Vinyl ester and Epoxy

PRODUCT CODE	DESCRIPTION	ROLL LENGTH (FT.)
696746	1/4" x 0.052 Spiral Wrap POLYETHYLENE, NATURAL, 1,000' PER SPOOL	1,000'
641337	3/8 X .052, STANDARD SPIRAL WRAP POLYETHYLENE, NATURAL, 500' PER SPOOL	500'
674469	1/2 X .062, STANDARD SPIRAL WRAP POLYETHYLENE, NATURAL, 300' PER SPOOL	300'
594358	5/8 X .062, STANDARD SPIRAL WRAP POLYETHYLENE, NATURAL, 200' PER SPOOL	200'
566780	3/4" X .065, STANDARD SPIRAL WRAP POLYETHYLENE, NATURAL, 100' PER SPOOL	100'
672322	1" .070, STANDARD SPIRAL WRAP POLYETHYLENE, NATURAL, 75' PER SPOOL	75'

*Additional inside and outside product diameters available. Additional roll length options available.*

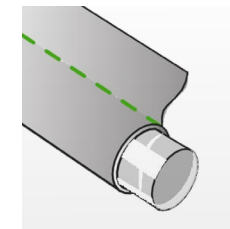
# Vector Fusion Flow & Feed Consumables



## VECTORVAC PS58-6

The VectorVac PS58-6 RED features an 8" tail designed to reduce resin flow into the catch pot by creating a resin break before it reaches the vacuum line. It is made from spiral tubing with Compoflex, which serves as an easy-removal peel ply, minimizing marks on the final part and aiding in the infusion break process. Sewn in red for easy visibility.

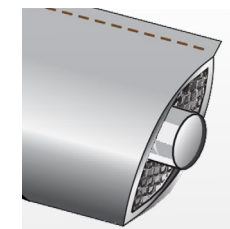
PRODUCT CODE	DESCRIPTION	MOQ
673170	VECTORVAC PS58-6 RED200LF/RL #VV586	10 rolls - 200LF



## VECTORFEED PS58

Vectorfeed PS 58 GREEN is specifically designed to efficiently deliver a high volume of resin to other feed lines rapidly. It features spiral tubing combined with Compoflex, sewn in green for enhanced visibility. The Compoflex material aids in preventing marks on the final parts, ensuring clean and smooth finishes in composite manufacturing processes.

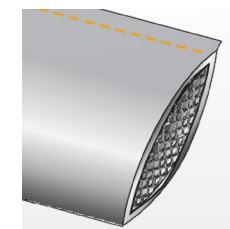
PRODUCT CODE	DESCRIPTION	MOQ
673171	VECTORFEED PS58 GREEN 200LF/RL #VF58	10 rolls - 200LF



## VECTORFEED PES58-2

Vectorfeed PES58-2 BROWN is engineered to efficiently transfer a high volume of resin to other feedlines swiftly, while preventing spiral prints and indentations in laminates. It offers 25% more resin flow compared to Vectorfeed Green. Constructed with spiral wrap, mesh, and covered with a perforated release film, it ensures optimal resin distribution and minimizes surface imperfections in composite manufacturing processes.

PRODUCT CODE	DESCRIPTION	MOQ
689948	VECTORFEED PES58-2 BROWN200LF/RL #VF582	10 rolls - 200LF



## VECTORFEED PE35

Vectorfeed PE 35 ORANGE is tailored for low-resin-flow applications, particularly suitable for vertical walls. Featuring a mesh-covered perforated release film, it facilitates easy removal after resin curing.

PRODUCT CODE	DESCRIPTION	MOQ
687141	VECTORFEED PE35 ORANGE 200LF/RL #VF35	10 rolls - 200LF